



Conservation Measures 18/10 on the Management of Vulnerable Deep Water Habitats and Ecosystems in the SEAFO Convention Area

The Contracting Parties,

CONSCIOUS of the need to protect vulnerable deep water habitats and marine ecosystems in the South East Atlantic Ocean,

RECOGNISING the calls by the United Nations General Assembly to protect vulnerable marine ecosystems, including the closure of areas where such systems are known to occur or are likely to occur,

FURTHER RECOGNISING the FAO International Guidelines for the Management of Deep-sea Fisheries in the High Seas,

RECALLING the relevant provisions of the SEAFO Convention, in particular Article 3 on general principles,

TAKING INTO ACCOUNT the FAO Code of Conduct for Responsible Fishing,

ACKNOWLEDGING that the recovery from damage to vulnerable marine ecosystems caused by fishing gear is either impossible or very difficult and slow, and

TAKING NOTE of the advice provided by the Scientific Committee as regards the areas of vulnerable marine ecosystems,

Have agreed as follows:

1. All fishing activities for fisheries resources covered by the SEAFO Convention shall be prohibited from 1 January 2011 in the areas defined in Annex 1 of this Conservation Measure.

Annex 1

Areas (Seamounts) and their coordinates prohibited to fisheries in accordance with paragraph 1

DIVISION A

- Area: (Kreps seamount), Number 16 on the attached map – considered to be unexploited.

Coordinates: 13°00'S 15°05'W
12°44'S 14°10'W
15°43'S 12°40'W
16°34'S 13°13'W
18°32'S 12°10'W
18°46'S 13°18'W
17°10'S 14°46'W
16°20'S 14°46'W
16°05'S 13°50'W

- Area: (Unnamed seamount), Number 17 on the attached map – considered to be unexploited.

Coordinates: 01°00'S 13°15'W
01°00'S 12°30'W
05°25'S 11°30'W
04°52'S 12°51'W
04°00'S 12°33'W

SUB-DIVISION A1

- Area: (Malachit Guyot Seamount), Number 1 on attached map – considered to be unexploited.

Coordinates: 10°51'S 01°25'W
11°35'S 00°40'W
13°44'S 02°57'W
13°03'S 03°45'W

DIVISION C

- Area: (Wüst seamount), Number 7 on the attached map – considered to be slightly exploited.

Coordinates: 32°57'S 06°50'W
31°51'S 03°39'W
32°28'S 01°30'W
34°34'S 00°40'W
36°17'S 00°40'W
36°17'S 01°23'W
34°10'S 02°23'W
36°20'S 06°16'W
34°53'S 07°43'W

- Area: (Africana seamount), Number 8 on the attached map – considered to be unexploited.

Coordinates: 37°00'S 28°45'E
37°00'S 29°21'E
37°25'S 29°21'E
37°25'S 28°45'E

- Area: (Schmidt-Ott Seamount), Number 9 on the attached map - considered to be slightly exploited.

Coordinates: 38°20'S 13°00'E
38°20'S 14°24'E
39°32'S 14°24'E
39°32'S 13°00'E

- Area: (Unnamed), Number 15 on the attached map - considered to be unexploited.

Coordinates: 29°19'S 14°22'W
29°17'S 12°54'W
31°57'S 12°47'W
32°08'S 14°18'W

SUB-DIVISION C1

- Area: (Vema Seamount), Number 6 on the attached map – considered to be slightly exploited.

Coordinates: 31°27'S 08°06'E
31°27'S 08°35'E
31°53'S 08°35'E
31°53'S 08°06'E

DIVISION D

- Area: (Herdman Seamounts), Number 12 on the attached map – considered to be unexploited.

Coordinates: 45°10'S 00°05'E
45°10'S 00°42'E
45°50'S 00°42'E
45°50'S 00°05'E

- Area: (Unnamed Seamounts), Number 14 on the attached map – considered to be unexploited.

Coordinates: 47°54'S 10°57'W
47°54'S 09°07'W
49°15'S 08°03'W
49°34'S 08°24'W
49°10'S 10°31'W

- Area: (Unnamed Seamounts), Number 18 on the attached map – considered to be slightly exploited.

Coordinates: 40°35'S 17°32'W
40°18'S 16°15'W
43°04'S 15°12'W
43°20'S 16°30'W

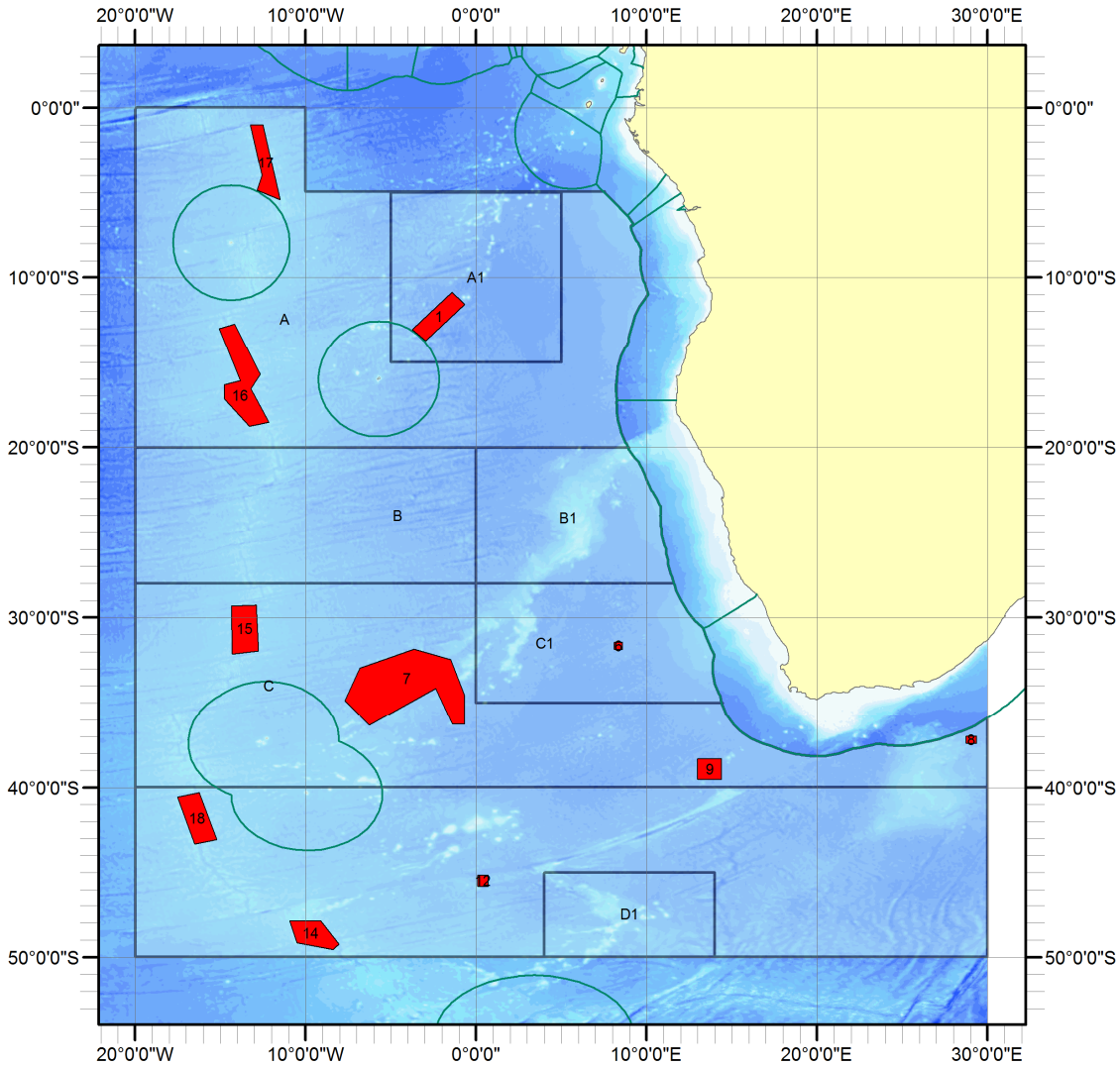


Figure 1. Map of closed areas in the SEAFO Convention Area.